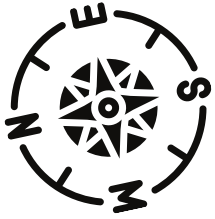


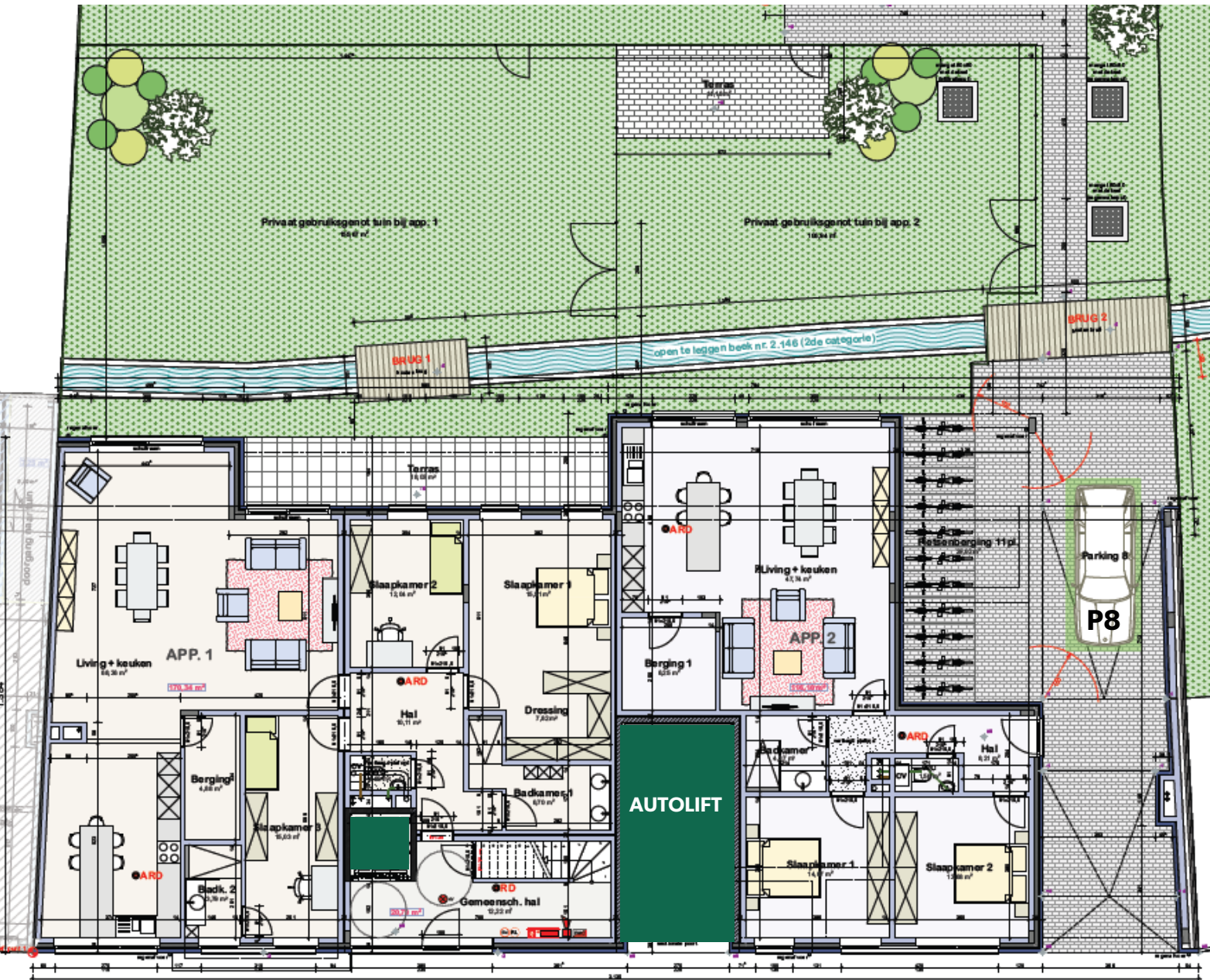
# Neroli Heverlee Groenstraat 193 - 195





# Neroli Heverlee - Verdieping 0





- LIFT
- VERKOCHT




  
**€ 35.000**


  
**€ 595.000**



  
**opp. privétuin**  
**155,67 m<sup>2</sup>**

**APPARTEMENT 1**  
 Groenstraat 193


**opp. appartement**  
**170,34 m<sup>2</sup>**


**opp terras**  
**18,03 m<sup>2</sup>**



**APPARTEMENT 2**  
 Groenstraat 195

**opp. appartement**  
**116,10 m<sup>2</sup>**

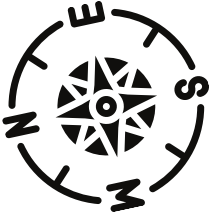
**opp terras**  
**14,16 m<sup>2</sup>**


  
**€ 475.000**

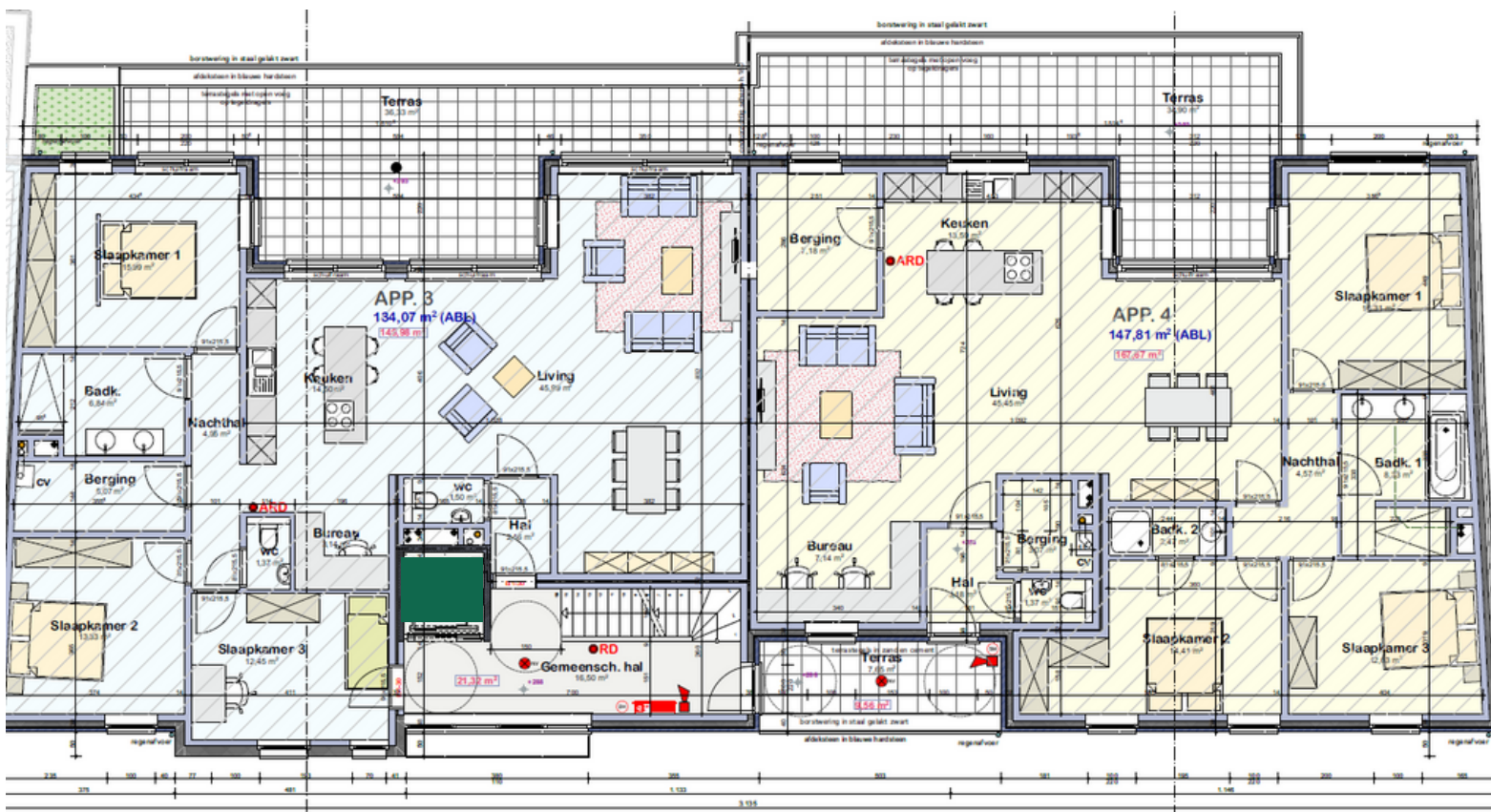

  
**€ 35.000**



  
**opp. privétuin**  
**106,94 m<sup>2</sup>**

# Neroli Heverlee - Verdieping 1



- LIFT
- VERKOCHT

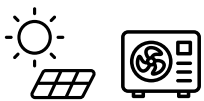


3 +   
 € 655.000

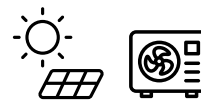
**APPARTEMENT 3**  
 Groenstraat 193

1 +   
 € 695.000

**APPARTEMENT 4**  
 Groenstraat 193



opp. appartement  
 149,98 m<sup>2</sup>



opp. appartement  
 167,67 m<sup>2</sup>



€ 35.000

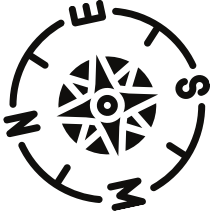
opp terras  
 36,33 m<sup>2</sup>



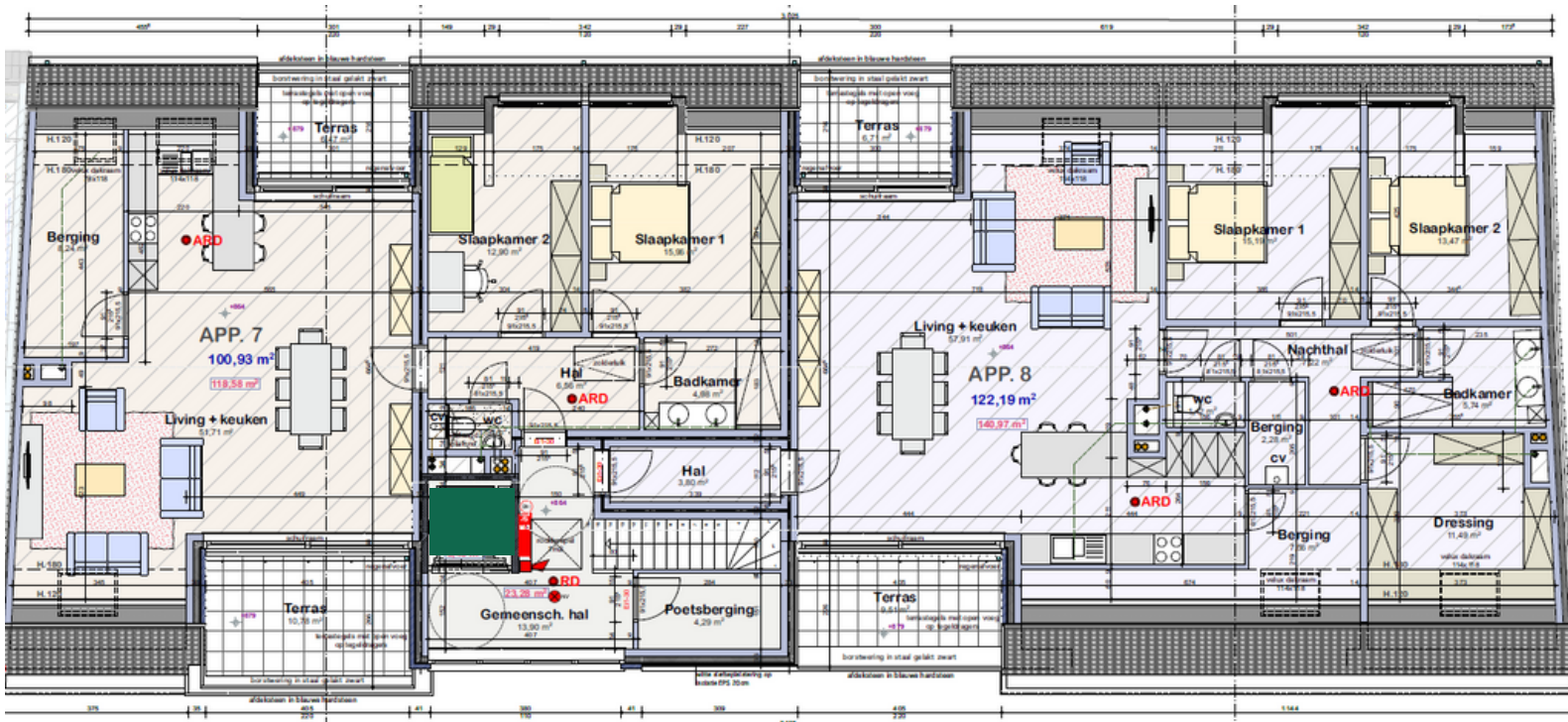
€ 35.000

opp terras  
 42,55 m<sup>2</sup>

# Neroli Heverlee - Verdieping 3



- LIFT
- VERKOCHT



3 +   
 € 615.000

**APPARTEMENT 5**  
Groenstraat 193

+   
 € 685.000

**APPARTEMENT 6**  
Groenstraat 193



opp. appartement  
145,31 m<sup>2</sup>



opp. appartement  
165,18 m<sup>2</sup>



€ 35.000

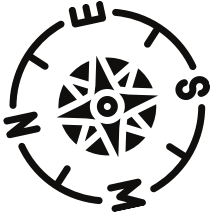
opp terras  
16,64 m<sup>2</sup>





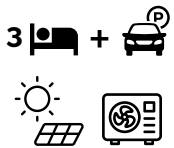
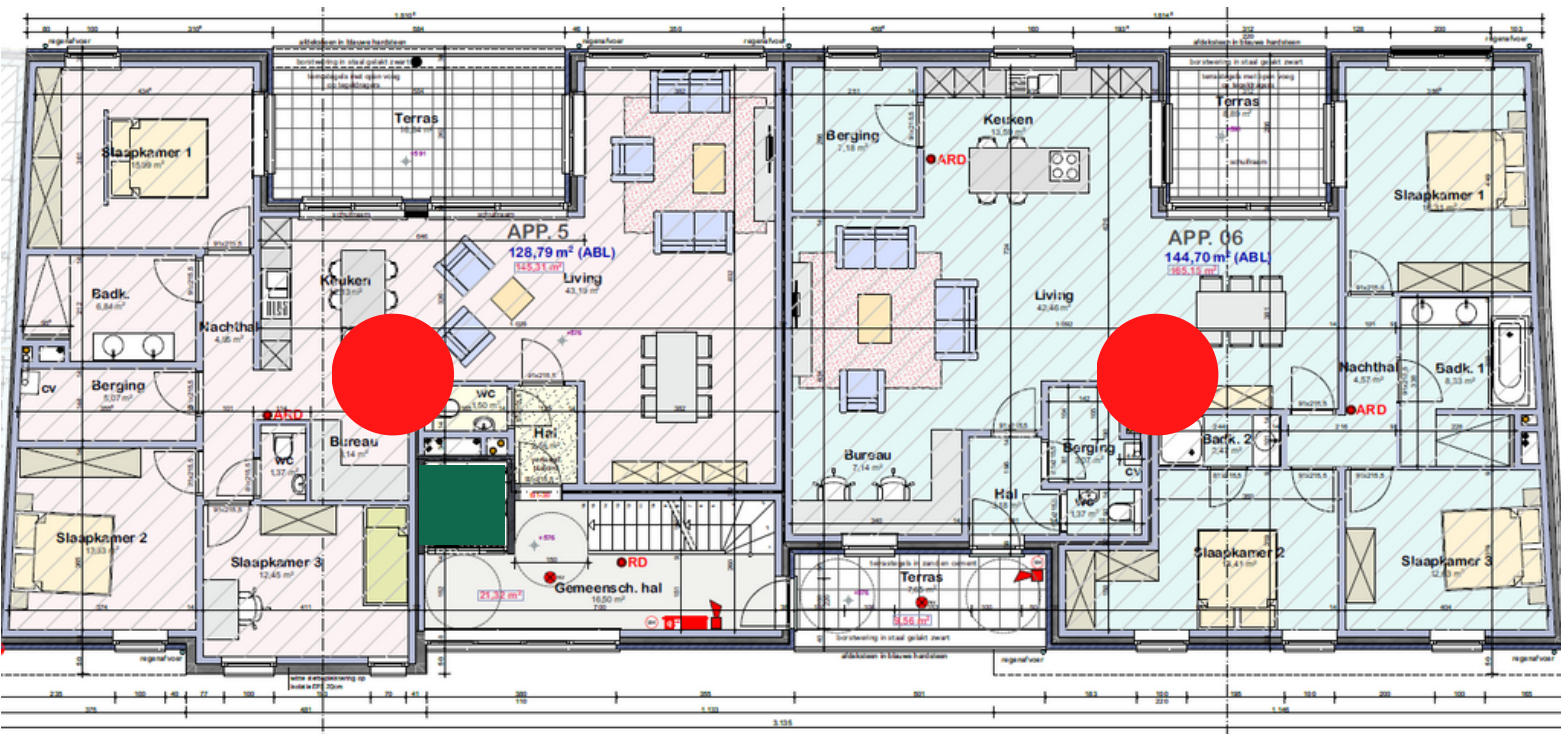
€ 35.000

opp terras  
16,54 m<sup>2</sup>

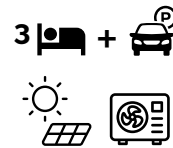
# Neroli Heverlee - Verdieping 3



-  LIFT
-  VERKOCHT

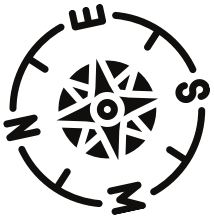


**APPARTEMENT 7**  
Groenstraat 193  
**VERKOCHT**

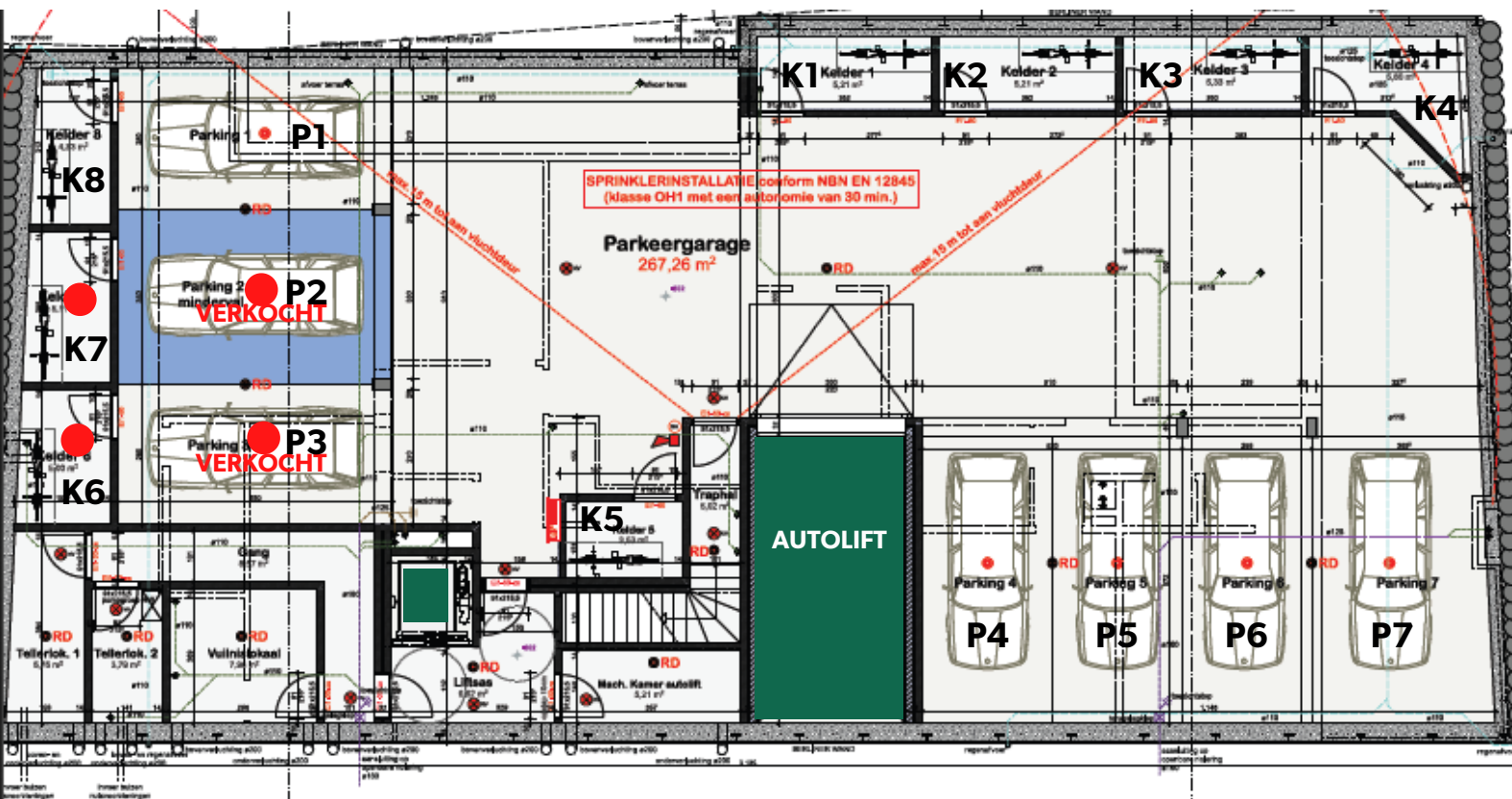


**APPARTEMENT 8**  
Groenstraat 193  
**VERKOCHT**

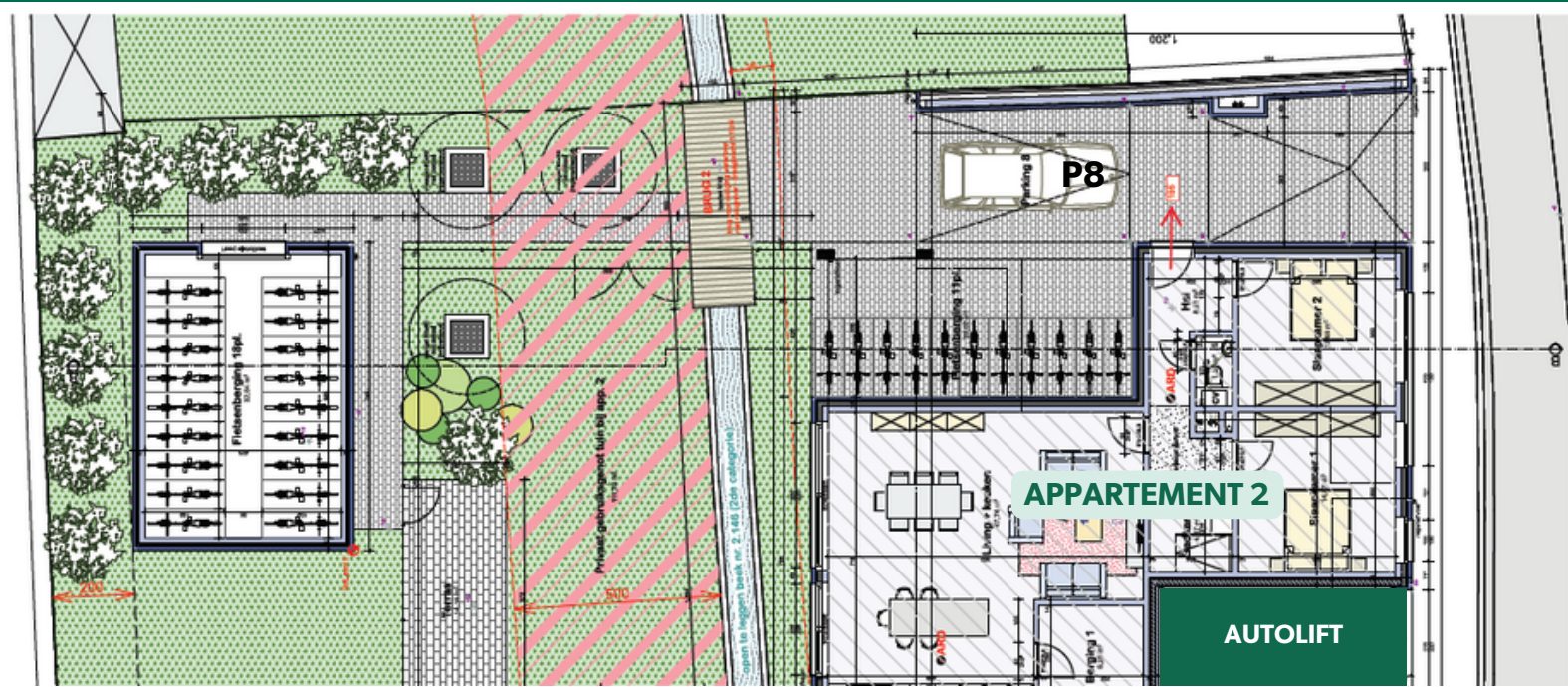
# Neroli Heverlee - Parking Verdieping -1



- LIFT
- VERKOCHT



# Neroli Heverlee - Parking Verdieping 0



# Neroli Heverlee - gevels



## Gevelmaterialen

- |   |   |
|---|---|
| 1 gevelsteen zwart M50, gevoegd         | 8 rockpanel zwart                                     |
| 2 gevelsteen lichtgrijs M50, gevoegd    | 9 houten gevelbekleding thermowood lichtbruin         |
| 3 dakbedekking vlakke zwarte pannen     | 10 zwart gelakte stalen borstwering                   |
| 4 aluminium buitenschrijnwerk mat zwart | 11 goten en afvoerbuizen in antrazink                 |
| 5 dorpels in blauwe hardsteen           | 12 afdeklaat in blauwe hardsteen                      |
| 6 dorpels in aluminium mat zwart        | 13 zwart gelakte aluminium combikap                   |
| 7 sierbepleistering wit                 | 14 gevelbekleding vezelcementplaat equitone betonlook |





# CONTACT

**WIJ STAAN KLAAR VOOR U**

**ADRESSEN**

Leuven - Dirk Boutslaan 4  
Bertem - Gemeenteplein 3  
Tienen - Goossensvest 1A

**TELEFOONNUMMERS**

016 56 56 14  
0475 40 50 00

**E-MAILADRES**

[info@immogve.be](mailto:info@immogve.be)

